

How to solve unclear character problem

Question:

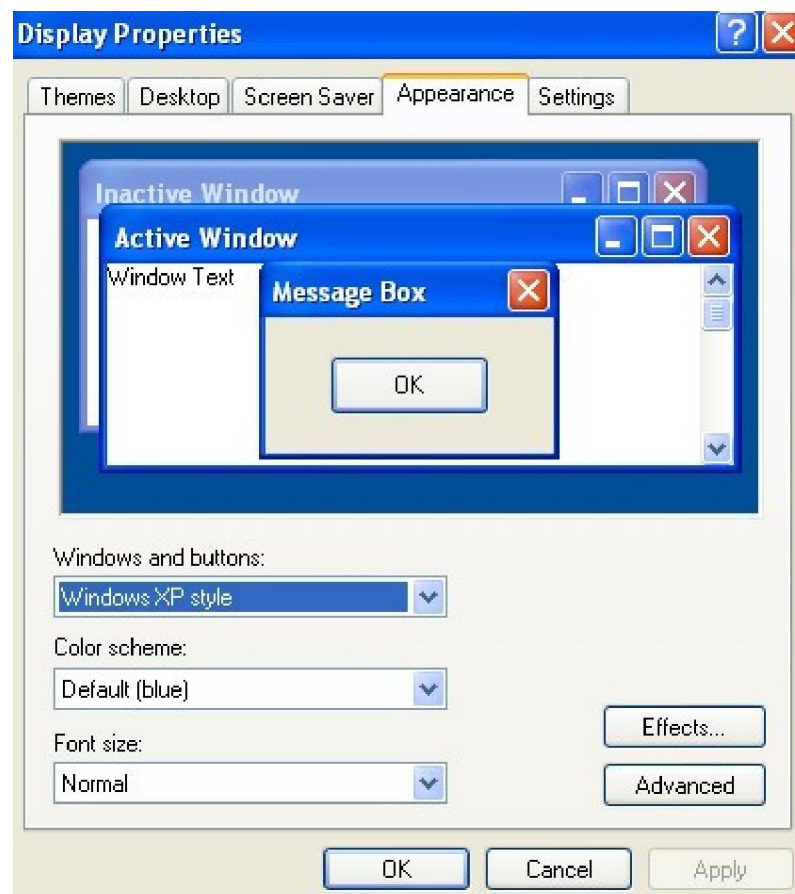
The controller works normal but characters show on display has some small problems, which means there are some led lights comes out around the character without control or there is shadow around the character.

Answer:

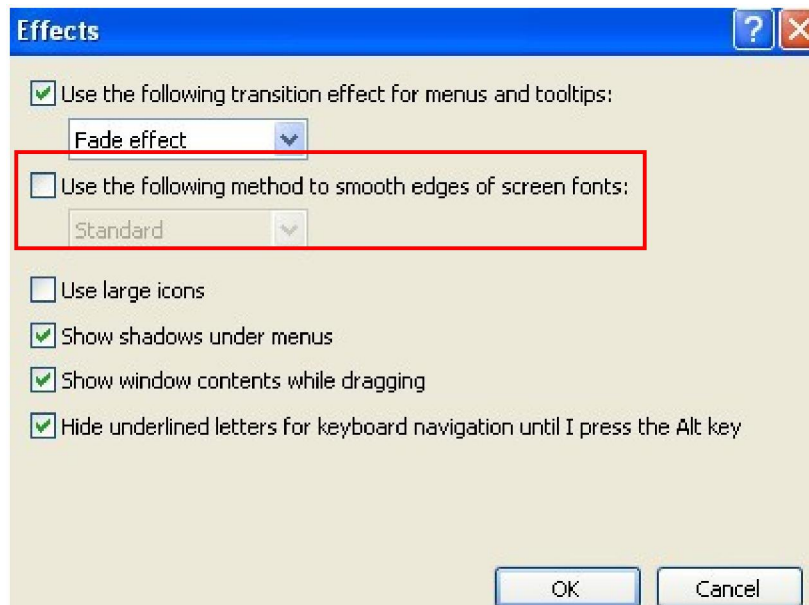
Under Windows XP system

Step1. Right click mouse on desktop and choose Properties

Step2. A dialogue box will come out and select Appearance

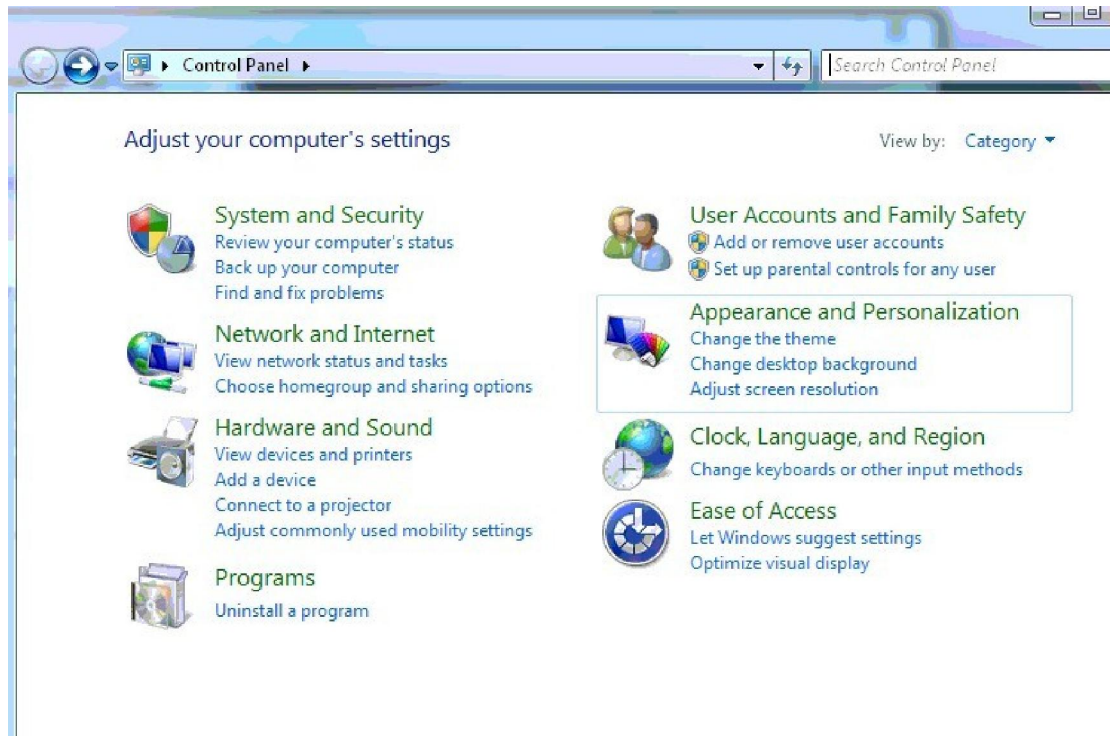


Step3. Click on Effects button and then remove the tick of "Use the following method to smooth edges of screen fonts"

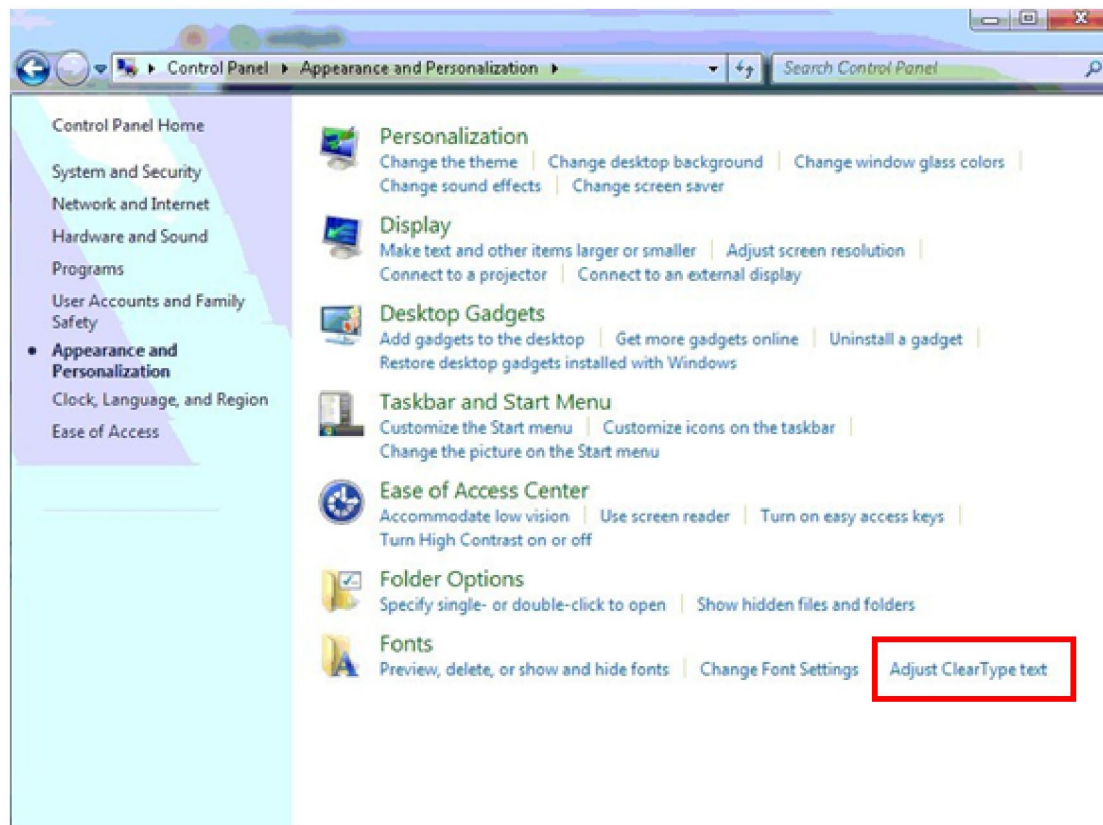


Under Windows 7 system:

Step1. Open Control Panel and then choose Appearance and Personalization



Step2. Choose Adjust Clear type Text



Step3. Do not choose "Turn on Clear Type" option.

